

A function is an Even Function if _____

A function is an Odd Function if _____

1. Determine (algebraically) whether the function is even, odd, or neither.

a. $f(x) = x^3 + x$

c. $f(x) = 2x^2 + 3x^4 + 1$

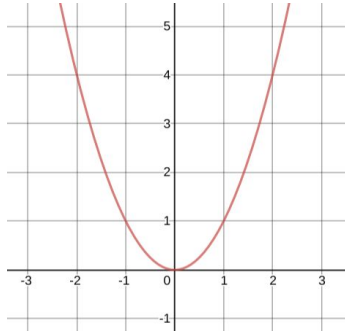
b. $f(x) = x^2 + 2x$

d. $f(x) = 2x^3 - 6x^5$

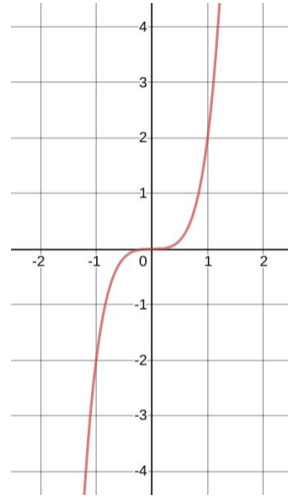
2.7 Day 2
Even and Odd Functions
Honors Algebra 2 with Trig

2. Use the graphs below to determine whether the relations are **even**, **odd**, or **neither**.

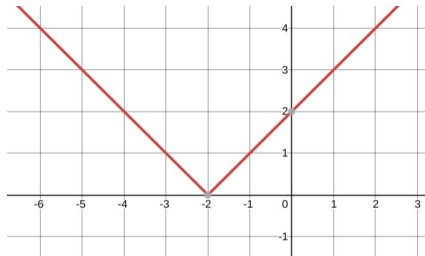
a.



c.



b.



d.

